

# SCHC EARLYON

CHILD AND FAMILY CENTRE NEWSLETTER



## Community Festival BBQ

Sincere appreciation to partners, families, colleagues and friends who contributed and attended our event this summer! The face painting, music, free food, activities and more created a wonderful event for all to enjoy! Thank you!

## Client Family Experience

We ask if you have visited our EarlyON Centre to please provide your feedback by clicking on the link here and filling out the form. This helps to improve our services to provide the best quality of care for you and your family. Thank you!

Staff: 416-847-4150

Office: 416-847-4153

Email: [earlyon@schcontario.ca](mailto:earlyon@schcontario.ca)

Cell: 416-454-5547



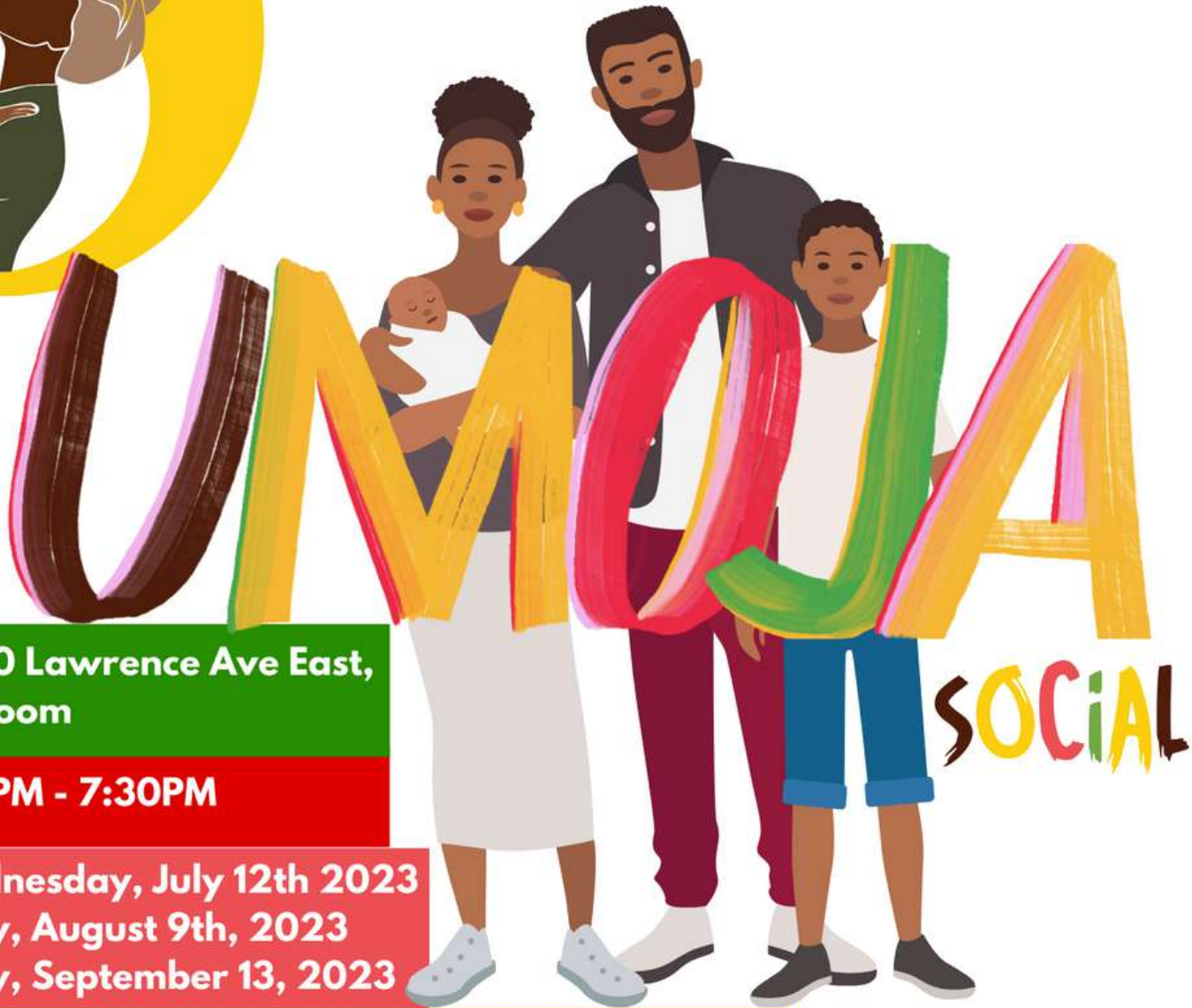
SCARBOROUGH  
CENTRE FOR  
HEALTHY  
COMMUNITIES

Located at 4110 Lawrence Avenue East,  
Main Floor, Apartment Building  
EarlyON Webpage  
Website: [www.schcontario.ca](http://www.schcontario.ca)

**EarlyON**  
Child and Family Centre



- No Registration Required!
- GIFT CARD RAFFLE!



**Where: 4110 Lawrence Ave East,  
Program Room**

**Time: 5:30PM - 7:30PM**

**Dates: Wednesday, July 12th 2023  
Wednesday, August 9th, 2023  
Wednesday, September 13, 2023**

**What : UMOJA (UNITY) SOCIAL is a drop-in program created by Black families for Black families. Join us to enjoy food, culture, peer support and empower one another as we emphasize belonging. Child minding offered and transportation support also available.**

**FOR MORE INFORMATION**  
**earlyon@schcontario.ca or**  
**416-642-9445 Muna ext 4155 or Chanel ext 4150**





# SUNNY SIDE UP SATURDAYS

JOIN US FOR A DELICIOUS BRUNCH FOR FAMILIES  
WITH LITTLE ONES (0-6 YEARS OLD)

**DROP-IN**  
No registration  
required



**GIFT CARD  
RAFFLES &  
PRIZES!**

- DATES:**
- Saturday, September 23, 2023
  - Saturday, October 28, 2023
  - Saturday, November 25, 2023

**TIME:**  
10AM-12:30PM

**LOCATION:**  
4110 Lawrence Ave East

**SERVING FOODS SUCH AS:**  
Ackee & Saltfish, Cornmeal  
Porridge, Choka, Suqaar &  
**MORE!**

**CONTACTS:**  
Chanel 647-564-9953  
Muna 647-613-2646

**\*\*PRESTO CARDS AVAILABLE  
CONTACT US FOR FURTHER DETAILS**



**S C**  
**H C**  
SCARBOROUGH  
CENTRE FOR  
HEALTHY  
COMMUNITIES



**EarlyON**  
Child and Family Centre



SCARBOROUGH  
CENTRE FOR  
HEALTHY  
COMMUNITIES

**EarlyON**  
Child and Family Centre

# READING PARTNERSHIP FOR BLACK PARENTS

## FOR CAREGIVERS & KIDS (AGES 4-6)

A FREE **evidence-based** early literacy program that guides caregivers through a **play-based** approach of teaching their children to read.

**JOIN US FOR OUR NEXT SESSION THIS FALL**

### IN-PERSON

Wednesdays | 5:30-7:30PM  
45 Windover Drive  
October 4th - December 6th

### ONLINE

Tuesdays | 5:00-6:30PM  
October 3rd - December 5th



**DEADLINE EXTENDED!**

**SCAN TO APPLY BY SEPT 22, 2023**



For more information, contact [earlyon@schcontario.ca](mailto:earlyon@schcontario.ca) or call / text **Chanel** at **647-564-9953** or **Muna** at **647-613-2646**



SCARBOROUGH  
CENTRE FOR  
HEALTHY  
COMMUNITIES

**EarlyON**  
Child and Family Centre



# தமிழ் இன்பம்

## TAMIL INBAM

An online program for Tamil families with children 0-6 years of age to introduce Tamil language & literacy activities through stories and songs. This program will start on Thursday, September 21st, 2023.

When: Thursday's  
Time: 4:30PM-5:00PM  
Location: Online(Zoom)

Register at [earlyon@schcontario.ca](mailto:earlyon@schcontario.ca)  
Contact Karuna at 416-847-4150 for more information

**\*MUST HAVE USE OF A SMART DEVICE OR COMPUTER TO JOIN\***



SCARBOROUGH  
CENTRE FOR  
HEALTHY  
COMMUNITIES

EarlyON

Child and Family Centre



# SCHC EARLYON

CHILD AND FAMILY CENTRE NEWSLETTER



## SUMMER PROGRAMMING!:

- The summer is here and some of our favorite programs are back!
- Please see attached calendars & flyers for our free programming.

### REGISTERED PROGRAMS:

1. **Kindergarten Readiness:** Thursdays 2pm to 430pm & Fridays 930am to 12pm.
2. **Summer Outings:** Once a week typically
3. **Trip to Ripley's Aquarium:** Wednesday, August 16th, 915am - 500pm

### SCHC EarlyON Client Experience

We ask if you have visited our EarlyON Centre to please provide your feedback by clicking on the link here and filling out the form. This helps to improve our services to provide the best quality of care for you and your family. Thank you!

EarlyON Staff: 416-847-4150  
Cell: 416-454-5547

EarlyON Coordinator: 416-847-4153

Email: [earlyon@schcontario.ca](mailto:earlyon@schcontario.ca)



SCARBOROUGH  
CENTRE FOR  
HEALTHY  
COMMUNITIES

Located at 4110 Lawrence Avenue East,  
Main Floor, Apartment Building  
EarlyON Webpage  
Website: [www.schcontario.ca](http://www.schcontario.ca)



Child and Family Centre

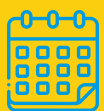
# KINDERGARTEN READINESS

**Join us in a  
free program  
series with  
giveaways!**

For children entering  
JK/SK September 2023



**4110 Lawrence Avenue East**



**JULY 13TH - AUGUST 25TH,  
2023**



**THURSDAYS: 2PM - 4:30PM  
FRIDAYS: 9:30AM - 12PM**



**Scan this  
code to  
register!**

Snacks provided! Free resources  
& presentations! Parents and  
Caregivers must remain onsite.  
Siblings welcome.

For more information,  
contact [earlyoneschcontario.ca](mailto:earlyoneschcontario.ca) or 416-847-4150



# SUNNY SIDE UP SATURDAYS

JOIN US FOR A DELICIOUS BRUNCH FOR FAMILIES  
WITH LITTLE ONES (0-6 YEARS OLD)

**DROP-IN**  
No registration  
required



**GIFT CARD  
RAFFLES &  
PRIZES!**

## DATES:

- Saturday, May 27, 2023
- Saturday, June 24, 2023
- Saturday, July 22, 2023
- Saturday, August 26, 2023
- Saturday, September 23, 2023
- Saturday, October 28, 2023
- Saturday, November 25, 2023

## TIME:

**10AM-12:30PM**

## LOCATION:

**4110 Lawrence Ave East**

## MENU:

**Ackee & Saltfish,  
Choka, Cornmeal  
Porridge and MORE!**

## CONTACTS:



**Chanel**

**416-642-9445  
ext. 4150**



**Muna**

**416-642-9445  
ext. 4155**

**\*\*PRESTO CARDS AVAILABLE. CONTACT US FOR  
FURTHER DETAILS**



**SCARBOROUGH  
CENTRE FOR  
HEALTHY  
COMMUNITIES**



**Early ON**  
Child and Family Centre





# SUMMER 2023

# COMMUNITY OUTINGS

## SCHEDULE:

**JULY 5TH:**  
MORNINGSIDE PARK + SPLASH PAD  
2PM - 4:30PM

**JULY 12TH:** PICNIC @ ST.MARGARET'S PARK  
2PM - 4:30PM

**JULY 19TH:** NO FRILLS: TREAT & GAME  
2PM - 4:30PM

**AUGUST 2ND:** MCDONALD'S TOUR + TREAT  
2PM - 4:30PM

**AUGUST 9TH:** MORNINGSIDE LIBRARY  
+ SPLASH PAD  
2PM - 4:30PM

**AUGUST 15TH:** POLICE STATION VISIT  
9:30AM - 12PM

**AUGUST 22ND:** FIRE STATION VISIT  
2PM - 4:30PM

**AUGUST 30TH:** END OF SUMMER GATHERING  
5:30PM - 7:30PM

**REGISTER:** By phone 416-847-4150  
By Email: [earlyon@schcontario.ca](mailto:earlyon@schcontario.ca)

**Location:** 4110 Lawrence Ave East





# RIPLEY'S AQUARIUM



**AUGUST 16 2023 9:15AM - 4:30PM**

**LOCATION: 288 BREMNER  
BLVD, TORONTO, ON**

**SCHOOL BUS AND ENTRY TICKETS  
FOR 1 ADULT PER FAMILY AND 2  
PAYING CHILDREN TICKETS WILL  
BE OFFERED BY SCHC. CHILDREN  
UNDER 2 FREE**



**FOOD TO PURCHASE IS  
AVAILABLE OR A PACKED LUNCH  
CAN BE OFFERED**

**PHONE: 416-847-4150**

**EMAIL: EARLYON@SCHCONTARIO.CA**

**SCAN TO REGISTER OR  
CLICK HERE FOR LINK**



SCARBOROUGH  
CENTRE FOR  
HEALTHY  
COMMUNITIES

**EarlyON**  
Child and Family Centre



# RIPLEY'S AQUARIUM FACT SHEET

**Where:** 288 Bremner Blvd, Toronto, ON

**Date:** Wednesday, August 16, 2023

**Time:** 9:15am-4:30pm

## AGENDA:

**Departure from 4110 Lawrence Ave E:** 9:30am

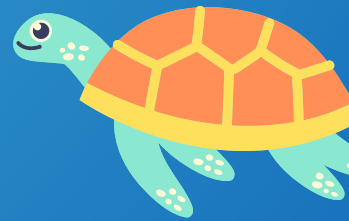
**Arrive at Ripley's:** 10:30am

**Outdoor lunch @Roundhouse Park:** 12:30pm

**Departure:** 4:30pm

## What to Bring?

- A Packed Lunch & Snacks
- A Water Bottle
- A Hat, Sunscreen, etc.
- Folding Umbrella Strollers only



[Visit Ripley's Aquarium site for more information](#)

**For Further Questions Contact Us!**

**Telephone: 416-847-4150**

**Email: [earlyon@schcontario.ca](mailto:earlyon@schcontario.ca)**

# SCHC EarlyON: Parent Education Sessions

## MAY JUNE 2023 Schedule



**May 3rd**

**Topic: Child Emotional Wellness**

**10:30AM  
to 11:30AM**

SCHC Community Health Nurse

**May 5th**

**Topic: Cancer Sreening Chat**

**4:30PM TO  
5:30PM**

SCHC Community Health Nurse

**June 7th**

**Topic: Gross Motor Development**

**10:30AM to  
11:30AM**

SCHC Community Health Nurse

**June 30th**

**Topic: Glitterbug: LGBTQ  
Affirmation Workshop & Circle**

**4PM TO  
6PM**

The 519 Registered Early  
Childhood Educator



Register by email:

[earlyon@schcontario.ca](mailto:earlyon@schcontario.ca)

Register by text or call:

**416-427-6781**

**Location: 4110 Lawrence Avenue East,  
Main Floor in Apartment Building**

**Offered Online (Zoom) & In-Person Onsite**

Child and Family Centre

EarlyON

SPACE FOR CHANGE



SCARBOROUGH  
CENTRE FOR  
HEALTHY  
COMMUNITIES



M	T	W	TH	F	S
			1	2	3
			I-ZONE (I) 9:30AM - 12:00PM  OE (O) 2:00PM - 4:30PM	FFN: BINGO NIGHT (I) 4PM TO 6PM	
5	6	7	8	9	10
CENTRE CLOSED FOR PROFESSIONAL DEVELOPMENT	PL (I) 9:30AM - 12:00PM S (I) 2:00PM - 3:00PM M&M (I) 3:00PM - 4:30PM *RPBP (V) 5:00PM - 6:30PM	PF (I) 9:30AM - 12:00PM *GROSS MOTOR DEVELOPMENT (V) 10:30AM - 11:30AM *RPBP (I) 5:00PM - 7:00PM	I-ZONE (I) 9:30AM - 12:00PM  OE (O) 2:00PM - 4:30PM	*WOMENS SELF DEFENSE (I) REGISTRATION REQUIRED 4PM TO 6:30PM  FFN: HENNA & FACE PAINTING (I) 4PM TO 6:30PM	
1 ON 1 (I + V) 10:00AM - 3:00PM	13	14	15	16	17
	PL (I) 9:30AM - 12:00PM HEWS (V) 1:30PM - 2:30PM PL (I) 2:00PM - 4:30PM *RPBP (V) 5:00PM - 6:30PM	PF (I) 9:30AM - 12:00PM PCAN (I) 10:00AM - 12:00PM *RPBP (I) 5:00PM - 7:00PM	I-ZONE (I) 9:30AM - 12:00PM  OE (O) 2:00PM - 4:30PM	FFN: FATHER'S DAY CELEBRATION (I) ALL ARE WELCOME 4PM TO 6PM	
*MW (V) 4:30PM - 5:00PM	19	20	21	22	23
	1 ON 1 (I + V) 10:00AM - 3:00PM PL (I) 9:30AM - 12:00PM  *LS (V) 4:30PM - 5:00PM	PL (I) 9:30AM - 12:00PM S (I) 2:00PM - 3:00PM M&M (I) 3:00PM - 4:30PM	PF (I) 9:30AM - 12:00PM  PL (I) 2:00PM - 3:30PM OE (O) 3:30PM - 4:30PM	FFN: CULTURE NIGHT (I) 4PM TO 6PM	
	26	27	28	29	30
	1 ON 1 (I + V) 10:00AM - 3:00PM PL (I) 9:30AM - 12:00PM  *MW (V) 4:30PM - 5:00PM	PL (I) 9:30AM - 12:00PM S (I) 2:00PM - 3:00PM M&M (I) 3:00PM - 4:30PM	PF (I) 9:30AM - 12:00PM  PL (I) 2:00PM - 3:30PM OE (O) 3:30PM - 4:30PM	I-ZONE (I) 9:30AM - 12:00PM  GLITTERBUG: LGBTQ AFFIRMATION WORKSHOP & CIRCLE (I) 4PM TO 6PM  FAMILY FUN NIGHT: MOVIE (I) 4PM TO 6PM	
					JULY 1
					HAPPY CANADA DAY

**I-Z (INFANT ZONE):** Children engage in activities to enhance peer interaction and secure attachment. All ages 0-6 welcome.

**\*RPBP (READING PARTNERSHIP PROGRAM FOR BLACK PARENTS):** Equips parents with skills to teach the fundamentals of reading to their children 4-6. Registration required.

**\*PF (PRESCHOOL FUN):** Children 2 to 6 will engage in play-based learning to increase structure in a classroom setting. Child minding offered 2+, siblings, all ages 0-6 welcome.

**SSUP (SUNNY SIDE UP SATURDAYS):** For families and children (0-6). Join our monthly Saturday program to enjoy a light breakfast and meet other caregivers in a community early learning setting.

**\*HEWS (HEALTHY EATING WORKSHOP SERIES):** Focuses on healthy eating strategies for children and their caregivers with SCHC Registered Dietician

**\*1ON1 (SUPPORT CONSULTATIONS):** Support with referrals to community services such as food needs, speech & language, child care subsidy etc. By appointment.

**PLEASE NOTE:** EarlyON Centre provides services for families & caregivers with their children 0 - 6. Caregivers must remain onsite & involved. All are welcome. (\*) means requires pre-registration.

**HOURS OF OPERATION:**  
MONDAYS TO THURSDAYS:  
9:30AM-12PM & 2PM-4:30PM  
FRIDAYS:  
9:30AM-12PM & 2PM- 6:00PM

**\*MW (MATH WIZARDS):** Learn numbers & math in activities such as song, rhyme and literacy. For ages 2-6.

**PL (PLAY & LEARN):** Play-based drop-in program providing learning opportunities & experiences.

**PCAN (Parent Caregiver Advisory Network):** Parents & caregivers provide feedback and ideas to co-design services & programs.

**\*LS (LITTLE SCIENTISTS):** Children 2-6 yrs will experience experiments and science activities to enhance concept skills etc.

**S (STORYTELLERS):** Introduce early literacy skills and engage in a variety of story-time opportunities.

**OE (OUTDOOR EXPLORE):** Explore nature outdoors & participate in physical literacy experiences.

**M&M (MUSIC & MOVEMENT):** Participate in songs, rhythm and movement.

**FFN (FAMILY FUN NIGHT):** Weekly themes such as Bingo Night, Lego Night, and Board Game Night etc. Takeaways & light dinner provided. Siblings welcome.

**LEGEND:**  
(V) = VIRTUAL ON ZOOM  
(I) = IN-PERSON/ONSITE  
(O) = OUTDOOR/ONSITE

**OE (OUTDOOR EXPLORE):** Explore nature, gardening & participate in physical literacy experiences.

**IZ (INFANT ZONE):** Children engage in activities to enhance peer interaction and secure attachment. All ages 0-6 welcome.

**\*PF (PRESCHOOL FUN):** Engage in play-based learning to increase structure in a classroom setting. Child-relief offered 2+, siblings & children 0-6 welcome.

**S (STORYTELLERS):** Introduce early literacy skills and engage in a variety of story-time opportunities.

**M&M (MUSIC & MOVEMENT):** Participate in songs, rhythm and movement.

**CO (Community Outing):** Visit local partners and groups in Scarborough & surrounding GTA for a deeper sense of community.

**\*1ON1 (SUPPORT CONSULTATIONS):** Support with referrals to community services such as food needs, speech & language, child care subsidy etc. By appointment.

**PL (PLAY & LEARN):** Play-based drop-in program providing learning opportunities & experiences.

**PCAN (Parent Caregiver Advisory Network):** Parents & caregivers provide feedback and ideas to co-design services & programs.

**UMOJA (UNITY) SOCIAL** is a gathering created by Black families for Black families. Enjoy food, culture and empower one another as we emphasize belonging. Child relief offered

**\*KR (KINDERGARTEN READINESS):** For children entering JK/SK in Sept 2023. Child-relief offered. Caregivers to remain onsite. Giveaways provided. Siblings welcome.

**RETURNS SEPTEMBER OCTOBER 2023**

- FAMILY FUN NIGHT
- MATH WIZARDS
- TAMIL TALES
- LITTLE SCIENTISTS
- READING PARTNERSHIP PROGRAM FOR BLACK PARENTS

**PLEASE NOTE:** EarlyON Centre provides services for families & caregivers with their children 0 - 6. Caregivers must remain onsite & involved. All are welcome. (\*) means requires pre-registration.

**HOURS OF OPERATION:**  
**MONDAYS TO THURSDAYS:** 9:30AM-12PM & 2PM-4:30PM  
**FRIDAYS:** 9:30AM-12PM & 2PM- 6:00PM

**LEGEND:**  
(V) = VIRTUAL ON ZOOM  
(I) = IN-PERSON/ONSITE  
(O) = OUTDOOR/ONSITE

**Email:** earlyon@schcontario.ca  
**Location:** 4110 Lawrence Avenue East  
[www.schcontario.ca](http://www.schcontario.ca)

**Phone:** 416-847-4153  
416-847-4150

M	T	W	TH	F	S
3 CENTRE CLOSED	4 PL (I) 9:30AM - 12:00PM S (I) 2:00PM - 3:00PM M&M (I) 3:00PM - 4:30PM	5 PF (I) 9:30AM - 12:00PM PCAN (I) 10:00AM - 12:00PM *CO: WALK TO MORNINGSIDE PARK + SPLASH PAD (O) 2:00PM - 4:30PM	6 I-ZONE (I) 9:30AM - 12:00PM PL (I) 2:00PM - 3:30PM OE (O) 3:30PM - 4:30PM	7 1 ON 1 (I + V) 10:00AM - 3:00PM OE (O) 9:30AM - 12:00PM	8
10 1 ON 1 (I + V) 10:00AM - 3:00PM OE (O) 9:30AM - 12:00PM	11 PL (I) 9:30AM - 12:00PM	12 PF (I) 9:30AM - 12:00PM *CO: PICNIC ST.MARGARET'S PARK (O) 2:00PM - 4:30PM UMOJA (UNITY) SOCIAL (I) 5:30PM - 7:30PM	13 I-ZONE (I) 9:30AM - 12:00PM *KR (I) 2:00PM - 4:30PM	14 *KR (I) 9:30AM - 12:00PM 1 ON 1 (I + V) 10:00AM - 3:00PM	15
17 1 ON 1 (I + V) 10:00AM - 3:00PM OE (O) 9:30AM - 12:00PM	18 PL (I) 9:30AM - 12:00PM S (I) 2:00PM - 3:00PM M&M (I) 3:00PM - 4:30PM	19 PF (I) 9:30AM - 12:00PM *CO: NO FRILLS VISIT + TREAT (O) 2:00PM - 4:30PM	20 I-ZONE (I) 9:30AM - 12:00PM *KR (I) 2:00PM - 4:30PM	21 *KR (I) 9:30AM - 12:00PM 1 ON 1 (I + V) 10:00AM - 3:00PM	22
24 1 ON 1 (I + V) 10:00AM - 3:00PM OE (O) 9:30AM - 12:00PM	25 PL (I) 9:30AM - 12:00PM S (I) 2:00PM - 3:00PM M&M (I) 3:00PM - 4:30PM	26 PF (I) 9:30AM - 12:00PM COMMUNITY FESTIVAL (O) 5:30PM - 7:30PM	27 I-ZONE (I) 9:30AM - 12:00PM *KR (I) 2:00PM - 4:30PM	28 *KR (I) 9:30AM - 12:00PM 1 ON 1 (I + V) 10:00AM - 3:00PM	29 SUNNY SIDE UP SATURDAYS (I) 10:00AM - 12:30PM
31 1 ON 1 (I + V) 10:00AM - 3:00PM OE (O) 9:30AM - 12:00PM					





M	T	W	TH	F	S
	1 PL (I) 9:30AM - 12:00PM S (I) 2:00PM - 3:00PM M&M (I) 3:00PM - 4:30PM	2 PF (I) 9:30AM - 12:00PM PCAN (I) 10:00AM - 12:00PM *CO: MCDONALD'S TOUR & ICE CREAM (O) 2:00PM - 4:30PM	3 I-ZONE (I) 9:30AM - 12:00PM  *KR (I) 2:00PM - 4:30PM	4 *KR (I) 9:30AM - 12:00PM  1 ON 1 (I + V) 10:00AM - 3:00PM	5
7 CIVIC DAY CENTRE CLOSED	8 PL (I) 9:30AM - 12:00PM S (I) 2:00PM - 3:00PM M&M (I) 3:00PM - 4:30PM	9 PF (I) 9:30AM - 12:00PM *CO: VISIT TO MORNINGSIDE LIBRARY + SPLASH PAD (O) 2:00PM - 4:00PM UMOJA (UNITY) SOCIAL (I) 5:30PM - 7:30PM	10 I-ZONE (I) 9:30AM - 12:00PM  *KR (I) 2:00PM - 4:30PM	11 *KR (I) 9:30AM - 12:00PM  1 ON 1 (I + V) 10:00AM - 3:00PM	12
14 1 ON 1 (I + V) 10:00AM - 3:00PM OE (O) 9:30AM - 12:00PM	15 *CO: POLICE VISIT (O) 9:30AM - 12:00PM	16 *RIPLEYS AQUARIUM (O) 9:00AM - 5:00PM	17 I-ZONE (I) 9:30AM - 12:00PM  *KR (I) 2:00PM - 4:30PM	18 *KR (I) 9:30AM - 12:00PM  1 ON 1 (I + V) 10:00AM - 3:00PM	19
21 1 ON 1 (I + V) 10:00AM - 3:00PM OE (O) 9:30AM - 12:00PM	22 PL (I) 9:30AM - 12:00PM  *CO: FIRE STATION VISIT + SPLASH PAD (O) 2:00PM - 4:30PM	23 PF (I) 9:30AM - 12:00PM	24 I-ZONE (I) 9:30AM - 12:00PM  *KR (I) 2:00PM - 4:30PM	25 *KR (I) 9:30AM - 12:00PM  1 ON 1 (I + V) 10:00AM - 3:00PM	26 SUNNY SIDE UP SATURDAYS (I) 10:00AM - 12:30PM
28 1 ON 1 (I + V) 10:00AM - 3:00PM OE (O) 9:30AM - 12:00PM	29 PL (I) 9:30AM - 12:00PM S (I) 2:00PM - 3:00PM M&M (I) 3:00PM - 4:30PM	30 PF (I) 9:30AM - 12:00PM  *END OF SUMMER GATHERING (O) 5:30PM - 7:30PM	31 PROFESSIONAL DEVELOPMENT  CENTRE CLOSED		

**OE (OUTDOOR EXPLORE):** Explore nature, gardening & participate in physical literacy experiences.

**IZ (INFANT ZONE):** Children engage in activities to enhance peer interaction and secure attachment. All ages 0-6 welcome.

**\*PF (PRESCHOOL FUN):** Engage in play-based learning to increase structure in a classroom setting. Child-relief offered 2+, siblings & children 0-6 welcome.

**S (STORYTELLERS):** Introduce early literacy skills and engage in a variety of story-time opportunities.

**M&M (MUSIC & MOVEMENT):** Participate in songs, rhythm and movement.

**CO (Community Outing):** Visit local partners and groups in Scarborough & surrounding GTA for a deeper sense of community.

**\*1ON1 (SUPPORT CONSULTATIONS):** Support with referrals to community services such as food needs, speech & language, child care subsidy etc. By appointment.

**PL (PLAY & LEARN):** Play-based drop-in program providing learning opportunities & experiences.

**PCAN (Parent Caregiver Advisory Network):** Parents & caregivers provide feedback and ideas to co-design services & programs.

**UMOJA (UNITY) SOCIAL** is a gathering created by Black families for Black families. Enjoy food, culture and empower one another as we emphasize belonging. Child relief offered

**\*KR (KINDERGARTEN READINESS):** For children entering JK/SK in Sept 2023. Child-relief offered. Caregivers to remain onsite. Giveaways provided. Siblings welcome.

**RETURNS SEPTEMBER OCTOBER 2023**

- FAMILY FUN NIGHT
- MATH WIZARDS
- TAMIL TALES
- LITTLE SCIENTISTS
- READING PARTNERSHIP PROGRAM FOR BLACK PARENTS

**PLEASE NOTE:** EarlyON Centre provides services for families & caregivers with their children 0 - 6. Caregivers must remain onsite & involved. All are welcome. (\*) means requires pre-registration.

**HOURS OF OPERATION:**  
**MONDAYS TO THURSDAYS:**  
9:30AM-12PM & 2PM-4:30PM  
**FRIDAYS:**  
9:30AM-12PM & 2PM- 6:00PM

**LEGEND:**  
(V) = VIRTUAL ON ZOOM  
(I) = IN-PERSON/ONSITE  
(O) = OUTDOOR/ONSITE





# NOVEMBER 2023

**OE (OUTDOOR EXPLORE):** Explore nature, gardening & participate in physical literacy experiences.

**IZ (INFANT ZONE):** Children engage in activities to enhance peer interaction and secure attachment. All ages 0-6 welcome.

**\*PF (PRESCHOOL FUN):** Engage in play-based learning to increase structure in a classroom setting. Child-relief offered 2+, siblings & children 0-6 welcome.

**S (STORYTELLERS):** Introduce early literacy skills & engage in a variety of story-time opportunities.

**M&M (MUSIC & MOVEMENT):** Participate in songs, rhythm and movement.

**UMOJA (UNITY) SOCIAL** is a gathering created by Black families for Black families. Enjoy food, culture and empower one another as we emphasize belonging. Child minding offered  
[CLICK HERE TO REGISTER](#)

**\*1ON1 (SUPPORT CONSULTATIONS):** Support with referrals to community services and resources. By appointment.

**PLEASE NOTE:** EarlyON Centre provides services for families & caregivers with their children 0 - 6. Caregivers must remain onsite & involved. All are welcome. (\*) means requires pre-registration.

**HOURS OF OPERATION:**  
MONDAYS TO THURSDAYS: 9:30AM-12PM & 2PM-4:30PM  
FRIDAYS: 9:30AM-12PM & 2PM- 6:00PM

**PL (PLAY & LEARN):** Play-based drop-in program providing learning opportunities & experiences.

**PCAN (Parent Caregiver Advisory Network):** Parents & caregivers provide feedback and ideas to co-design services & programs.

**\*Tamil Inbam தமிழ் இன்பம்** Introduces Tamil language and culture with literacy, song & music activities.

**\*HEWS (HEALTHY EATING WORKSHOP SERIES):** Focuses on healthy eating strategies for children and their caregivers with SCHC Registered Dietician

**\*STEM CLUB (V):** Fun with numbers, math and science in activities such as song, rhyme and literacy. For ages 2-6.

**\*READING PARTNERSHIP PROGRAM FOR BLACK FAMILIES:** Learn fundamentals of reading to children 4-6. Registration closed. @Willow Park JPS

**FFN: (FAMILY FUN NIGHT):** Weekly themes such as Bingo, Lego Challenges and Board Game Night. Light dinner provided. Siblings welcome.

**LEGEND:**  
(V) = VIRTUAL (ZOOM) Click link on program  
(I) = IN-PERSON/ONSITE  
(O) = OUTDOOR/ONSITE

**Email:** earlyon@schcontario.ca

**Location:** 4110 Lawrence Avenue East

[www.schcontario.ca](http://www.schcontario.ca)

**Phone:** 416-847-4153

416-847-4150

M	T	W	TH	F	S
		1 INFANT ZONE (I) 9:30AM - 12:00PM  *RPBP (I) 4:00PM - 6:00PM	2 PF (I) 9:30AM - 12:00PM PL (I) 2:00PM - 3:30PM OE (O) 3:30PM - 4:30PM *TI (V) 4:30PM - 5:00PM	3 OE (O) 9:30AM - 12:00PM HEWS (I) 4:00PM - 5:00PM FFN: LEGO CHALLENGE NIGHT (I) 4PM - 6PM	4
6 1 ON 1 (I + V) 10:00AM - 3:00PM  *STEM CLUB (V) 4:30PM - 5:00PM	7 PL (I) 9:30AM - 12:00PM S (I) 2:00PM - 3:00PM M&M (I) 3:00PM - 4:30PM *RPBP (V) 5:00PM - 6:30PM	8 INFANT ZONE (I) 9:30AM - 12:00PM  *RPBP (I) 4:00PM - 6:00PM	9 PF (I) 9:30AM - 12:00PM PCAN (I) 10:00AM - 11:00AM PL (I) 2:00PM - 3:30PM OE (O) 3:30PM - 4:30PM *TI (V) 4:30PM - 5:00PM	10   FFN: TALENT SHOW (I) 4PM - 6PM	11
13 1 ON 1 (I + V) 10:00AM - 3:00PM  *STEM CLUB (V) 4:30PM - 5:00PM	14 PL (I) 9:30AM - 12:00PM S (I) 2:00PM - 3:00PM M&M (I) 3:00PM - 4:30PM *RPBP (V) 5:00PM - 6:30PM	15 INFANT ZONE (I) 9:30AM - 12:00PM  *RPBP (I) 4:00PM - 6:00PM	16 PF (I) 9:30AM - 12:00PM PL (I) 2:00PM - 3:30PM OE (O) 3:30PM - 4:30PM *TI (V) 4:30PM - 5:00PM	17 1 ON 1 (I + V) 10:00AM - 3:00PM  FFN: PAINT NIGHT (I) 4PM - 6PM	18
20 1 ON 1 (I + V) 10:00AM - 3:00PM  *STEM CLUB (V) 4:30PM - 5:00PM	21 PL (I) 9:30AM - 12:00PM S (I) 2:00PM - 3:00PM M&M (I) 3:00PM - 4:30PM *RPBP (V) 5:00PM - 6:30PM	22 INFANT ZONE (I) 9:30AM - 12:00PM  *RPBP (I) 4:00PM - 6:00PM	23 PF (I) 9:30AM - 12:00PM PL (I) 2:00PM - 3:30PM OE (O) 3:30PM - 4:30PM *TI (V) 4:30PM - 5:00PM	24 1 ON 1 (I + V) 10:00AM - 3:00PM  FFN: MOVIE NIGHT (I) 4PM - 6PM	25 NO PROGRAMMING
27 1 ON 1 (I + V) 10:00AM - 3:00PM  *STEM CLUB (V) 4:30PM - 5:00PM  UMOJA (UNITY) SOCIAL (I) 5:30PM - 7:30PM	28 PL (I) 9:30AM - 12:00PM S (I) 2:00PM - 3:00PM M&M (I) 3:00PM - 4:30PM *RPBP (V) 5:00PM - 6:30PM	29 INFANT ZONE (I) 9:30AM - 12:00PM  *RPBP (I) 4:00PM - 6:00PM	30 PF (I) 9:30AM - 12:00PM PL (I) 2:00PM - 3:30PM OE (O) 3:30PM - 4:30PM *TI (V) 4:30PM - 5:00PM		







# DECEMBER 2023

M

T

W

TH

F

S

FIND US ON SOCIAL MEDIA



**OE (OUTDOOR EXPLORE):** Explore nature, gardening & participate in physical literacy experiences.

**IZ (INFANT ZONE):** Children engage in activities to enhance peer interaction and secure attachment. All ages 0-6 welcome.

**\*PF (PRESCHOOL FUN):** Engage in play-based learning to increase structure in a classroom setting. Child-relief offered 2+, siblings & children 0-6 welcome.

**S (STORYTELLERS):** Introduce early literacy skills and engage in a variety of story-time opportunities.

**M&M (MUSIC & MOVEMENT):** Participate in songs, rhythm and movement.

**\*STEM CLUB (V):** Fun with numbers, math and science in activities such as song, rhyme and literacy. For ages 2-6. Returns Jan'24

**\*1ON1 (SUPPORT CONSULTATIONS):** Support with referrals to community services and resources. By appointment.

**PL (PLAY & LEARN):** Play-based drop-in program providing learning opportunities & experiences.

**PCAN (Parent Caregiver Advisory Network):** Parents & caregivers provide feedback and ideas to co-design services & programs.

**\*RPBP (READING PARTNERSHIP PROGRAM FOR BLACK PARENTS):** Equips parents with skills to teach the fundamentals of reading to their children 4-6. Registration required. **New location! @Willow Park JPS**

**\*Tamil Inbam தமிழ் இன்பம்** Introduces Tamil language and culture with literacy, song and music activities. Returns Jan'24

**\*HEWS (HEALTHY EATING WORKSHOP SERIES):** Focuses on healthy eating strategies for children and their caregivers with SCHC Registered Dietician

**FFN: (FAMILY FUN NIGHT):** Weekly themes such as Bingo, Lego Challenges and Board Game Night. Light dinner provided. Siblings welcome.

**PLEASE NOTE:** Our EarlyON Centre provides services for families & caregivers with their children 0 - 6. Caregivers must remain onsite & involved. All are welcome. (\*) means requires pre-registration.

**HOURS OF OPERATION:**  
**MONDAYS TO THURSDAYS:** 9:30AM-12PM & 2PM-4:30PM  
**FRIDAYS:** 9:30AM-12PM & 2PM- 6:00PM

**LEGEND:**  
(V) = VIRTUAL (ZOOM) Click link on program  
(I) = IN-PERSON/ONSITE  
(O) = OUTDOOR/ONSITE

**Email:** earlyon@schcontario.ca  
**Location:** 4110 Lawrence Avenue East  
[www.schcontario.ca](http://www.schcontario.ca)

**Phone:** 416-847-4153  
416-847-4150

4  
**1 ON 1 (I + V)**  
10:00AM - 3:00PM

5  
PL (I)  
9:30AM - 12:00PM  
S (I)  
2:00PM - 3:00PM  
M&M (I)  
3:00PM - 4:30PM  
\*RPBP (V)  
5:00PM - 6:30PM

6  
**INFANT ZONE (I)**  
9:30AM - 12:00PM  
  
\*RPBP (I)  
4:00PM - 6:00PM

7  
PF (I)  
9:30AM - 12:00PM  
HEWS (V/I)  
10:00AM - 11:00AM  
PL (I)  
2:00PM - 4:30PM

8  
**1 ON 1 (I + V)**  
10:00AM - 3:00PM  
  
FFN: TELEPHONE GAME (I)  
4PM - 6PM

11  
**1 ON 1 (I + V)**  
10:00AM - 3:00PM

12  
PL (I)  
9:30AM - 12:00PM  
S (I)  
2:00PM - 3:00PM  
M&M (I)  
3:00PM - 4:30PM  
\*RPBP (V)  
5:00PM - 6:30PM

13  
**INFANT ZONE (I)**  
9:30AM - 12:00PM  
\*RPBP CELEBRATION  
ONLINE & IN-PERSON  
FAMILIES (I)  
4:30PM - 6:30PM  
@WILLOWPARK JPS

14  
PF (I)  
9:30AM - 12:00PM  
PCAN (I)  
10:00AM - 11:00AM

15  
CENTRE CLOSED FOR STAFF DEVELOPMENT

18  
**1 ON 1 (I + V)**  
10:00AM - 3:00PM  
\*HOLIDAY SPECIAL PICKUP  
REGISTRATION CLOSED  
9:30AM - 4:30PM

19  
\*HOLIDAY SPECIAL PICKUP  
REGISTRATION CLOSED  
9:30AM - 4:30PM

20  
\*HOLIDAY SPECIAL OFFSITE VENUE  
REGISTRATION CLOSED  
4:30PM - 7:00PM

21  
\*HOLIDAY SPECIAL PICKUP  
REGISTRATION CLOSED  
9:30AM - 4:30PM

22  
\*HOLIDAY SPECIAL OFFSITE VENUE  
REGISTRATION CLOSED  
4:00PM - 7:00PM

25  
**CHRISTMAS DAY**  
CENTRE CLOSED

26  
**BOXING DAY**  
CENTRE CLOSED

27  
PL (I)  
9:30AM - 12:00PM  
  
STORYTELLERS + M&M  
HOLIDAY EDITION (I)  
2:00PM - 4:30PM

28  
  
HOT CHOCOLATE & COOKIE DECORATING EVENT (I)  
2PM - 4:30PM

29  
**FAMILY FUN DAY: PAJAMAS & PANCAKES HOLIDAY EDITION (I)**  
9:30AM - 12:00PM



# JANUARY 2024

**OE (OUTDOOR EXPLORE):** Explore nature, gardening & participate in physical literacy experiences.

**IZ (INFANT ZONE):** Children engage in activities to enhance peer interaction and secure attachment. All ages 0-6 welcome.

**\*PF (PRESCHOOL FUN):** Engage in play-based learning to increase structure in a classroom setting. Child-relief offered 2+, siblings & children 0-6 welcome.

**S (STORYTELLERS):** Introduce early literacy skills and engage in a variety of story-time opportunities.

**M&M (MUSIC & MOVEMENT):** Participate in songs, rhythm and movement.

**\*STEM CLUB (V):** Fun with numbers, math and science in activities such as song, rhyme and literacy. For ages 2-6.

**\*1ON1 (SUPPORT CONSULTATIONS):** Support with referrals to community services and resources. By appointment.

**PLEASE NOTE:** Our EarlyON Centre provides services for families & caregivers with their children 0 - 6. Caregivers must remain onsite & involved. All are welcome. (\*) means requires pre-registration.

**HOURS OF OPERATION:**  
**MONDAYS TO THURSDAYS:** 9:30AM-12PM & 2PM-4:30PM  
**FRIDAYS:** 9:30AM-12PM & 2PM- 6:00PM

**LEGEND:**  
 (V) = VIRTUAL (ZOOM) Click link on program  
 (I) = IN-PERSON/ONSITE  
 (O) = OUTDOOR/ONSITE

**PL (PLAY & LEARN):** Play-based drop-in program providing learning opportunities & experiences.

**PCAN (Parent Caregiver Advisory Network):** Parents & caregivers provide feedback and ideas to co-design services & programs.

**\*Tamil Inbam தமிழ் இன்பம்** Introduces Tamil language and culture with literacy, song and music activities.

**\*HEWS (HEALTHY EATING WORKSHOP SERIES):** Focuses on healthy eating strategies for children and their caregivers with SCHC Registered Dietician

**FFN: (FAMILY FUN NIGHT):** Weekly themes such as Bingo, Lego Challenges and Board Game Night. Light dinner provided. Siblings welcome.

M	T	W	TH	F	S
1 NEW YEAR'S DAY CENTRE CLOSED	2 PL (I) 9:30AM - 12:00PM S (I) 2:00PM - 3:00PM M&M (I) 3:00PM - 4:30PM	3 PL (I) 9:30AM - 12:00PM	4 PL (I) 9:30AM - 12:00PM PL (I) 2:00PM - 3:30PM OE (O) 3:30PM - 4:30PM	5 1 ON 1 (I + V) 10:00AM - 3:00PM FAMILY FUN DAY: WINTER CRAFTS (I) 9:30AM - 12:00PM	6
8 1 ON 1 (I + V) 10:00AM - 3:00PM	9 PL (I) 9:30AM - 12:00PM S (I) 2:00PM - 3:00PM M&M (I) 3:00PM - 4:30PM	10 INFANT ZONE (I) 9:30AM - 12:00PM	11 PF (I) 9:30AM - 12:00PM PCAN (I) 10:00AM - 11:00AM PL (I) 2:00PM - 4:30PM	12 1 ON 1 (I + V) 10:00AM - 3:00PM HEWS (I) 4:00PM - 5:00PM FFN: NEW YEAR'S RESOLUTIONS (I) 4PM - 6PM	13
15 1 ON 1 (I + V) 10:00AM - 3:00PM *STEM CLUB (V) 4:30PM - 5:00PM	16 PL (I) 9:30AM - 12:00PM S (I) 2:00PM - 3:00PM M&M (I) 3:00PM - 4:30PM	17 INFANT ZONE (I) 9:30AM - 12:00PM	18 PF (I) 9:30AM - 12:00PM PL (I) 2:00PM - 3:30PM *TI (V) 4:30PM - 5:00PM	19 1 ON 1 (I + V) 10:00AM - 3:00PM FFN: PARENTS VS CHILDREN GAMES: (I) 4PM - 6PM	20
22 1 ON 1 (I + V) 10:00AM - 3:00PM *STEM CLUB (V) 4:30PM - 5:00PM	23 PL (I) 9:30AM - 12:00PM S (I) 2:00PM - 3:00PM M&M (I) 3:00PM - 4:30PM	24 INFANT ZONE (I) 9:30AM - 12:00PM	25 PF (I) 9:30AM - 12:00PM PL (I) 2:00PM - 3:30PM OE (O) 3:30PM - 4:30PM *TI (V) 4:30PM - 5:00PM	26 1 ON 1 (I + V) 10:00AM - 3:00PM FFN: MOVIE NIGHT (I) 4PM - 6PM	27
29 1 ON 1 (I + V) 10:00AM - 3:00PM *STEM CLUB (V) 4:30PM - 5:00PM	30 PL (I) 9:30AM - 12:00PM S (I) 2:00PM - 3:00PM M&M (I) 3:00PM - 4:30PM	INFANT ZONE (I) 9:30AM - 12:00PM			



FIND US ON SOCIAL MEDIA





# FEBRUARY 2024

**OE (OUTDOOR EXPLORE):** Explore nature, gardening & participate in physical literacy experiences.

**IZ (INFANT ZONE):** Children engage in activities to enhance peer interaction and secure attachment. All ages 0-6 welcome.

**\*PF (PRESCHOOL FUN):** Engage in play-based learning to increase structure in a classroom setting. Child-relief offered 2+, siblings & children 0-6 welcome.

**S (STORYTELLERS):** Introduce early literacy skills and engage in a variety of story-time opportunities.

**M&M (MUSIC & MOVEMENT):** Participate in songs, rhythm and movement.

**\*STEM CLUB (V):** Fun with numbers, math and science in activities such as song, rhyme and literacy. For ages 2-6.

**\*1ON1 (SUPPORT CONSULTATIONS):** Support with referrals to community services and resources. By appointment.

**PLEASE NOTE:** Our EarlyON Centre provides services for families & caregivers with their children 0 - 6. Caregivers must remain onsite & involved. All are welcome. (\*) means requires pre-registration.

**HOURS OF OPERATION:**  
MONDAYS TO THURSDAYS: 9:30AM-12PM & 2PM-4:30PM  
FRIDAYS: 9:30AM-12PM & 2PM- 6:00PM

**LEGEND:**  
(V) = VIRTUAL (ZOOM) Click link on program  
(I) = IN-PERSON/ONSITE  
(O) = OUTDOOR/ONSITE

**Email:** earlyon@schcontario.ca  
**Location:** 4110 Lawrence Avenue East

**Phone:** 416-847-4153  
416-847-4150

[www.schcontario.ca](http://www.schcontario.ca)

M	T	W	TH	F	S
			1	2	3
		INFANT ZONE (I) 9:30AM - 12:00PM	PF (I) 9:30AM - 12:00PM PL (I) 2:00PM - 3:30PM OE (O) 3:30PM - 4:30PM	1 ON 1 (I + V) 10:00AM - 3:00PM HEWS (I) 4:00PM - 5:00PM FFN: NINTENDO NIGHT (I) 4PM - 6PM	
5	6	7	8	9	10
1 ON 1 (I + V) 10:00AM - 3:00PM  *STEM CLUB (V) 4:30PM - 5:00PM	PL (I) 9:30AM - 12:00PM S (I) 2:00PM - 3:00PM M&M (I) 3:00PM - 4:30PM	INFANT ZONE (I) 9:30AM - 12:00PM	PF (I) 9:30AM - 12:00PM PCAN (I) 10:00AM - 11:00AM PL (I) 2:00PM - 4:30PM *TI (V) 4:30PM - 5:00PM	1 ON 1 (I + V) 10:00AM - 3:00PM  FFN: VALENTINE'S DAY EVENT (I) 4PM - 6PM	
12	13	14	15	16	17
1 ON 1 (I + V) 10:00AM - 3:00PM  *STEM CLUB (V) 4:30PM - 5:00PM	PL (I) 9:30AM - 12:00PM S (I) 2:00PM - 3:00PM M&M (I) 3:00PM - 4:30PM	INFANT ZONE (I) 9:30AM - 12:00PM	PF (I) 9:30AM - 12:00PM  PL (I) 2:00PM - 3:30PM *TI (V) 4:30PM - 5:00PM	1 ON 1 (I + V) 10:00AM - 3:00PM  FFN: SENSORY NIGHT (I) 4PM - 6PM	
19	20	21	22	23	24
FAMILY DAY CENTRE CLOSED	PL (I) 9:30AM - 12:00PM S (I) 2:00PM - 3:00PM M&M (I) 3:00PM - 4:30PM	INFANT ZONE (I) 9:30AM - 12:00PM	PF (I) 9:30AM - 12:00PM PL (I) 2:00PM - 3:30PM OE (O) 3:30PM - 4:30PM *TI (V) 4:30PM - 5:00PM	1 ON 1 (I + V) 10:00AM - 3:00PM  FFN: MOVIE NIGHT (I) 4PM - 6PM	
26	27	28	29		
1 ON 1 (I + V) 10:00AM - 3:00PM  *STEM CLUB (V) 4:30PM - 5:00PM	PL (I) 9:30AM - 12:00PM S (I) 2:00PM - 3:00PM M&M (I) 3:00PM - 4:30PM	INFANT ZONE (I) 9:30AM - 12:00PM	PF (I) 9:30AM - 12:00PM PL (I) 2:00PM - 3:30PM OE (O) 3:30PM - 4:30PM *TI (V) 4:30PM - 5:00PM		



FIND US ON SOCIAL MEDIA

